

POWERED BY

vizpin®

# Entegrity Smart™ Lock



## Installation Instructions

## Parts List:

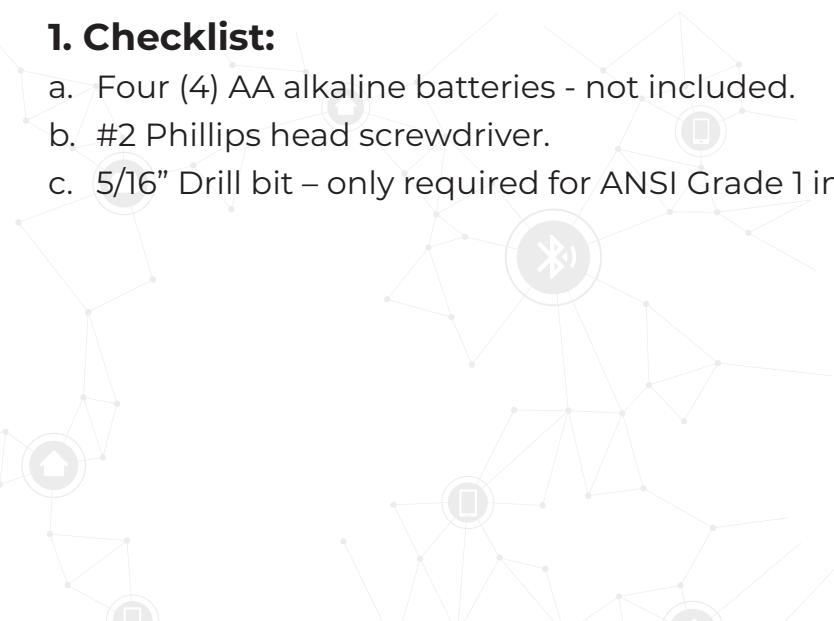
Latch (either 2 3/4" or 2 3/8")	Outside Handle
Adjustment Tool	Outside Rubber Gasket
Lock Motor	SFIC Core
Outside Shank	Operating Keys (2)
Mounting Plate	Control Key (1)
Inside Shank	#8x3/4" screws (2)
Battery Pack	M6x10 screws (2)
Inside Cover	M5x38mm screws (4)
Inside Handle	M4x12 hex screw (2)
Outside Cover	

## The Entegrity Smart Lock can only be installed on a door that:

- ▶ is between 1 3/8" and 2" thick.
- ▶ has a 2 1/8" door prep.
- ▶ has 2 3/4" or 2 3/8" backset.

## 1. Checklist:

- Four (4) AA alkaline batteries - not included.
- #2 Phillips head screwdriver.
- 5/16" Drill bit – only required for ANSI Grade 1 installation.



## 2. FOR ANSI Grade 1 Installation ONLY:

**IF ANSI GRADE 1 IS NOT REQUIRED REMOVE THE OUTER STUDS AND SKIP TO SECTION 3**

- Determine which backset fits your installation ( $2\frac{3}{4}$ " or  $2\frac{3}{8}$ ").
- Fold installation template along the dashed line, place it on the door and mark the holes.
- Drill the two  $\frac{5}{16}$ " holes for the ANSI Grade 1 posts.

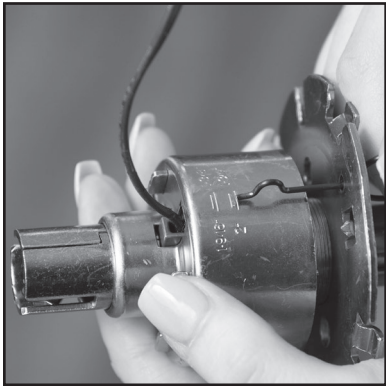
## 3. Latch Installation

Ensure the latch bolt bevel is facing the closing direction of the door and secure the Latch to the door using two (2) #8x $\frac{3}{4}$ " screws.



The Latch should extend into the hole as shown. If it extends too far, or not enough, you may have the incorrect Latch.

## 4. Adjust for Door Thickness



Insert the Adjustment Tool and rotate the plate to the appropriate door thickness mark.

---

## 5. Outside Shank

Align and connect the Lock Motor to the Outside Shank.

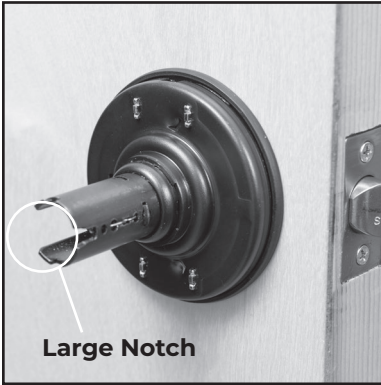
---



Insert the Lock Motor so that the latch retractor faces the edge of the door.

*NOTE: The smart lock is not UL compliant with the Outside Rubber Gasket installed.*

---

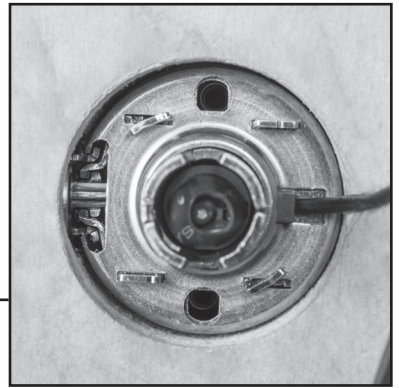


The large notch on the Outside Shank should face away from the edge of the door.

---

The latch retractor should catch the Latch and the Lock Motor cable should face away from the edge of the door.

---



## 6. Mounting Plate

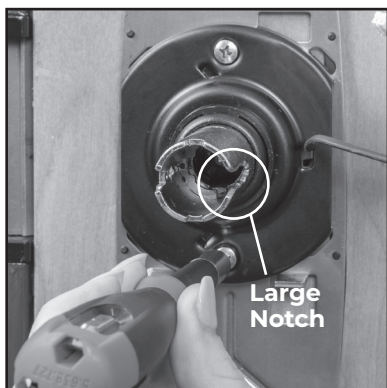
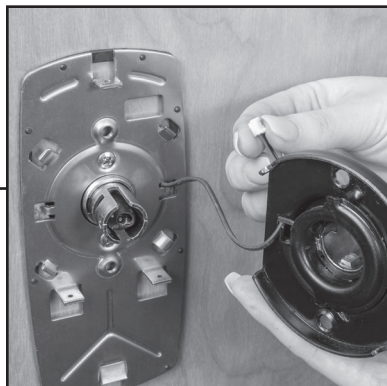
Carefully feed the Lock Motor cable through the hole and attach the Mounting Plate using two (2) M5x38mm screws.

---

## 7. Inside Shank

Carefully feed the Lock Motor cable through the hole on the Inside Shank.

---



Align the Inside Shank so the large notch faces away from the edge of the door. Attach the Inside Shank to the Mounting Plate using two (2) M6x10mm screws.

*For ANSI Grade 1 Installations only, attach the Mounting Plate to the outer studs using the two (2) additional M5X38mm screws.*

---

## 8. Battery Installation

Install four (4) AA alkaline batteries in the Battery Pack.

---



Insert the Battery Pack in the Inside Cover using one (1) flathead M4x12 hex screw. After the screw is fully tightened, loosen the screw by one full turn.

---



## 9. PC Board

Plug the Lock Motor cable into the Inside Cover PC board.

---



## 10. Inside Cover

Place the Inside Cover on the Mounting Plate and fully tighten the battery pack screw loosened in step 8. Use one (1) M4x12 hex screw to secure the Inside Cover to the Mounting Plate.

*Make sure the wires do not get pinched when attaching the cover.*

---





## 11. Inside Handle

Slide the Inside Handle over the Inside Shank until it clicks.

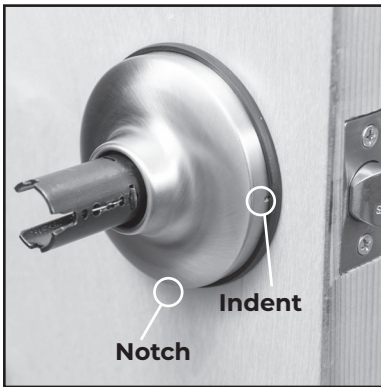
---



## 12. Outside Cover

Make sure that the notch is at the bottom with the two indents on the left and right and snap the Outside Cover over the Outside Shank.

---



## 13. SFIC Core

Insert the SFIC Core into the Outside Handle using the Control Key and remove the Control Key.

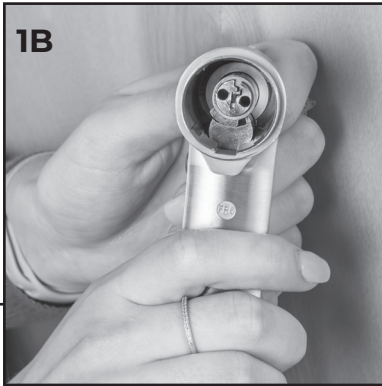
---





## 14. Outside Handle

Ensure the two pins in the Outside Shank (1A) align with the two holes in SFIC Core (1B). With the Operating Key inserted in the Outside Handle, slide it over the Outside Shank until it clicks in place and can't be removed (1C).



## 15. Apply Settings

Apply the smart lock settings using a Smartkey on your VIZpin SMART app.

**NOTE: The smart lock may be in a locked state. Please ensure you have the operation key and/or a valid smartkey before closing and securing the door.**





355 E. Liberty Street, Suite 210  
Lancaster, PA 17602

**(717) 327-4244**  
**VIZpin.com**

