

ENTEGRITY

SUBTLE • SECURE • SMART



SMART LOOK SMART LOCK

powered by **vizpin**



ENTEGRITY

SUBTLE • SECURE • SMART

The **Entegrity Smart Lock** is the perfect balance of **brains, brawn** and **beauty**. The clean design matches any decor and the easy-to-use management tools are perfect for 1 door to 1,000. Protect your tenants and your investment with **Entegrity**.



outside



inside

4X
battery life

tested to
800,000
activations

70%
lower
operating
costs

0
network
connections

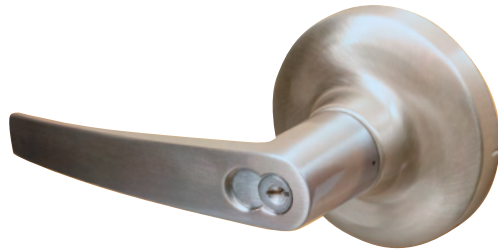




PORTFOLIO



ICON



SILHOUETTE



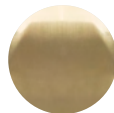
STAINLESS



NICKEL



BRONZE



BRASS

Entegri Smart Locks offer high security and reliability in an elegant, subtle package

- **discrete, low-profile** exterior matches any decor
- **unique Bluetooth design** with no network connection
- **4 AA batteries** last for years
- **easy installation**
- **manage access anytime**, from anywhere, using simple VIZpin cloud tools
- perfect for apartments, offices, equipment rooms, restrooms and more